

HOW TO CHOOSE THE RIGHT MARINE PUMP FOR YOUR BOAT



Find the one that meets your boat's specific needs.

**BUYING
GUIDE**



Choosing a marine pump can feel overwhelming, especially given the variety of models and applications available. However, with a few practical tips, you can easily find the pump that fits the specific needs of your boat.

Whether you're looking for a bilge pump, freshwater pump, or even a pump for sanitary systems, this guide is here to help you make an informed decision.

1

Different types of marine pumps



2

How to Choose the Right Marine Pump



3

Comparative of marine pumps by power and usage



4

Maintenance tips to extend it's lifespan



01

DIFFERENT TYPES OF MARINE PUMPS

BILGE PUMPS

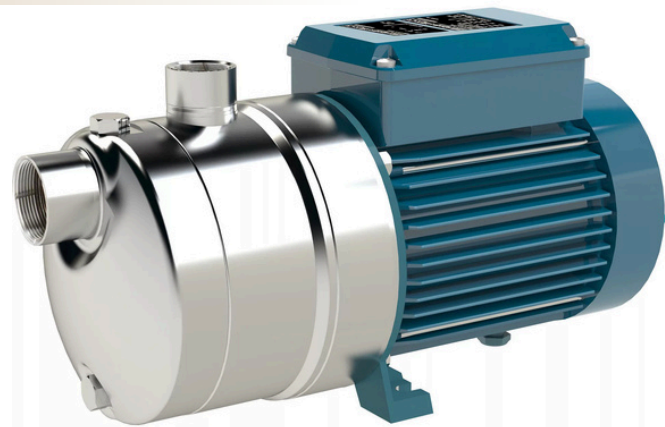


cf. Gianneschi CP20

Designed for quickly removing water accumulated in the bilge to prevent submersion risks. For optimal efficiency, these models are built with high flow rates and corrosion-resistant structures.

FRESHWATER PUMPS

Ensure the distribution of potable water onboard for showers, kitchens, or faucets. These quiet pumps maintain consistent pressure and are compatible with your boat's water tanks.



cf. Calpeda MXH

WASHDOWN PUMPS

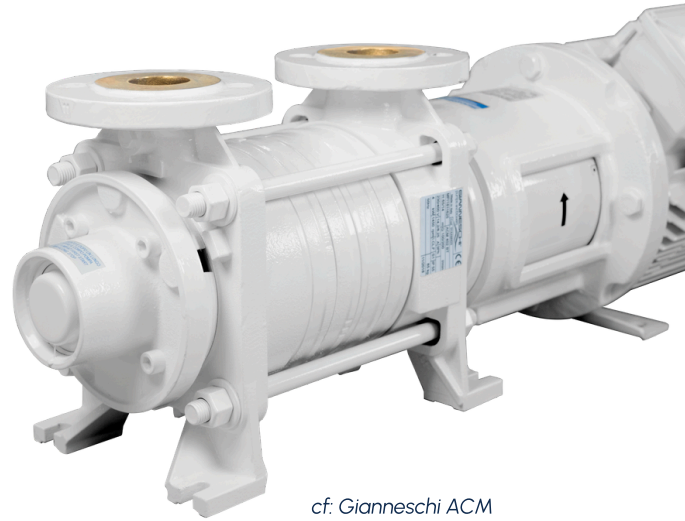


cf. Gianneschi MVI

Used for cleaning decks and outdoor areas. These pumps are characterized by high pressure and robust designs.

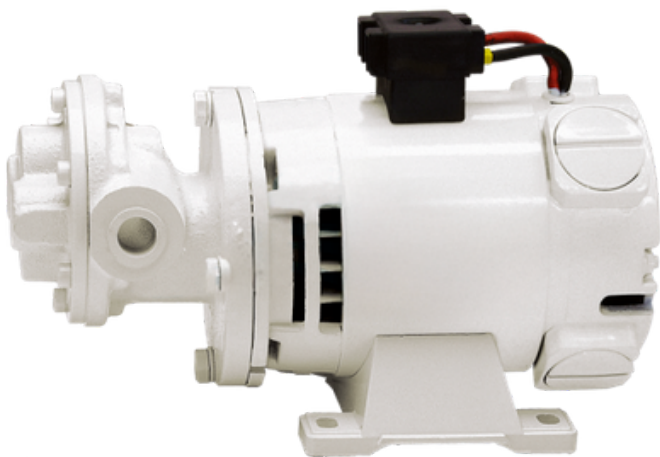
ELECTRIC MARINE TOILET PUMPS

Handle wastewater and ensure the proper functioning of sanitary facilities. These reliable and easy-to-maintain models are ideal for onboard systems.



cf. Gianneschi ACM

FUEL TRANSFER PUMPS



cf. Gianneschi IN12

Specifically designed to safely move fuel. They offer precise flow rates, leak prevention, and resistance to hydrocarbons

02

HOW TO CHOOSE THE RIGHT MARINE PUMP

Follow these simple steps to select the ideal marine pump

Identify Your Needs :

Start by asking yourself:

What will this pump be used for?

A bilge pump for safety?

A freshwater pump for comfort?

A washdown pump for maintenance?

Consider the Size and Type of Your Boat :

Large yachts often require more powerful equipment than small pleasure boats.

Examine Technical Specifications :

Flow Rate : This is a critical feature, usually expressed in liters per minute or hour.

Voltage : Ensure the pump is compatible with your boat's electrical system.

Materials : Opt for corrosion-resistant materials to ensure durability, especially in saltwater environments.

Choose trusted brands well-known for their quality and reliability.



ZOOM

ON OUR PARTNER BRANDS



A leader in luxury nautical equipment, Gianneschi offers robust pumps ideal for yachts and superyachts.



With a wide range of pumps for various applications, Calpeda is synonymous with performance and reliability.

D3

COMPARATIVE TABLE OF MARINE PUMPS BY POWER AND USAGE

| Pump type | Marques recommandées | Puissance recommandée | Type de bateau | Utilisation principale |
|------------------------------|----------------------|--|---------------------------------|---|
| Blige pumps | Gianneschi, Marinco | 60-200 W or 600-3000 L/h | Small pleasure boats | Rapid removal of accumulated water |
| | | 200-400 W or 3000-6000 L/h | Yachts and superyachts | Enhanced safety in marine environments |
| Freshwater pumps | Calpeda, Marinco | 50-100 W or constant flow of 20-50 L/min | Medium-sized boats | Portable water distribution |
| Washdown pumps | Gianneschi, Marinco | 200-400 W or pressure up to 4-6 bars | Yachts, professional boats | Efficient cleaning of decks and equipment |
| Electric marine toilet pumps | Calpeda, Mennekes | 50-150 W or flow rate of 10-20 L/min | All boat types | Wastewater management |
| Fuel transfer pumps | Gianneschi, Calpeda | 100-300 W or flow rate of 30-100 L/min | Yachts and professional vessels | Safe fuel transfer |

D4

MAINTENANCE TIPS TO EXTEND YOUR PUMP'S LIFESPAN

Regular maintenance ensures your pump's efficiency and durability :

- **Clean the Pump** Prevent deposits or dirt buildup.
- **Inspect seals and connections** to avoid potential leaks
- **Test Functionality** and check performance at the start of each season to spot issues early.

Entrust complex repairs to qualified professionals, such as those at Lyvio Marine's workshop.

WHY CHOOSE LYVIO MARINE FOR YOUR MARINE PUMPS



A wide range of pumps from the best brands



Personalized advice backed by our technical expertise.



Fast and reliable delivery in France and internationally.



Dedicated after-sales service to guarantee your satisfaction.

Marine pumps are crucial for the safety, comfort, and proper functioning of your boat. With the insights from this guide and Lyvio Marine's expertise, finding the ideal pump has never been easier.

Visit our shop or contact us for personalized assistance.



4 Avenue Frédéric Mistral, 06600 Antibes
contact@lyviomarine.fr
+33 (4) 93. 34. 18. 89.

